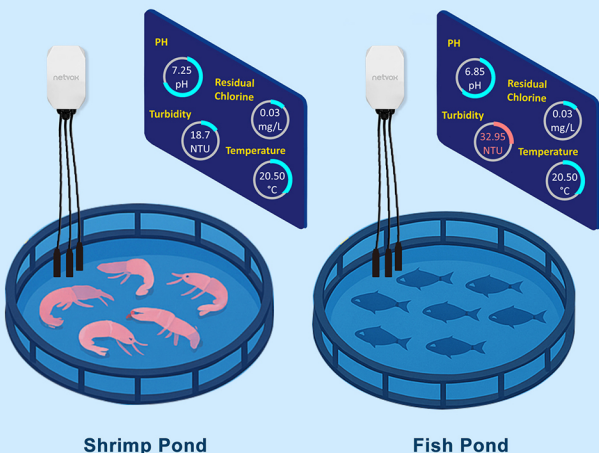


One Sensor, Complete Water Profile

— pH, Residual Chlorine, Turbidity and Temperature

R900PD0101

Wireless Water pH / Turbidity
/ Residual Chlorine / Temperature
Sensor with 1 x Digital Output



Measuring Range

pH	Turbidity	Residual Chlorine	Temperature
0 pH to 14pH	0 NTU to 1000 NTU	0 mg/L to 10mg/L	0 °C to 65°C

New In The Upgrade



Support 7 Different Mounting Types



NFC App for Easy Configuration



Large Memory for 10000 Packets of Data



ER18505 for Longer Battery Lifetime

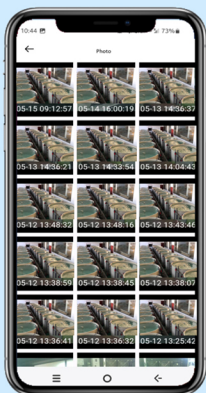


Connected 4G Camera for IoT Visualization

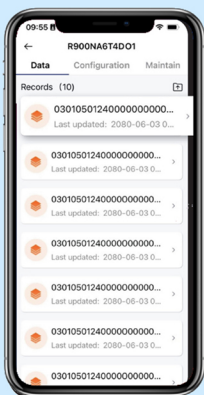


Optional Transmission Protocols

See, Hear, and Link



WA08A linked to
capture photos.



Easier operation via
the app.



Watch the video
on YouTube

When the R900PD01O1 detects that the **pH, turbidity, residual chlorine, or temperature** exceeds or falls below its thresholds, it will...



WA08

4G / Wifi Camera



R603

Wireless Customized
Voice Announcer



3rd-party device



See

Capture and send
image of objects.



Hear

Sound custom
alarm to notify
people.



Linkage

Get 3rd-party device
connected through
digital out.